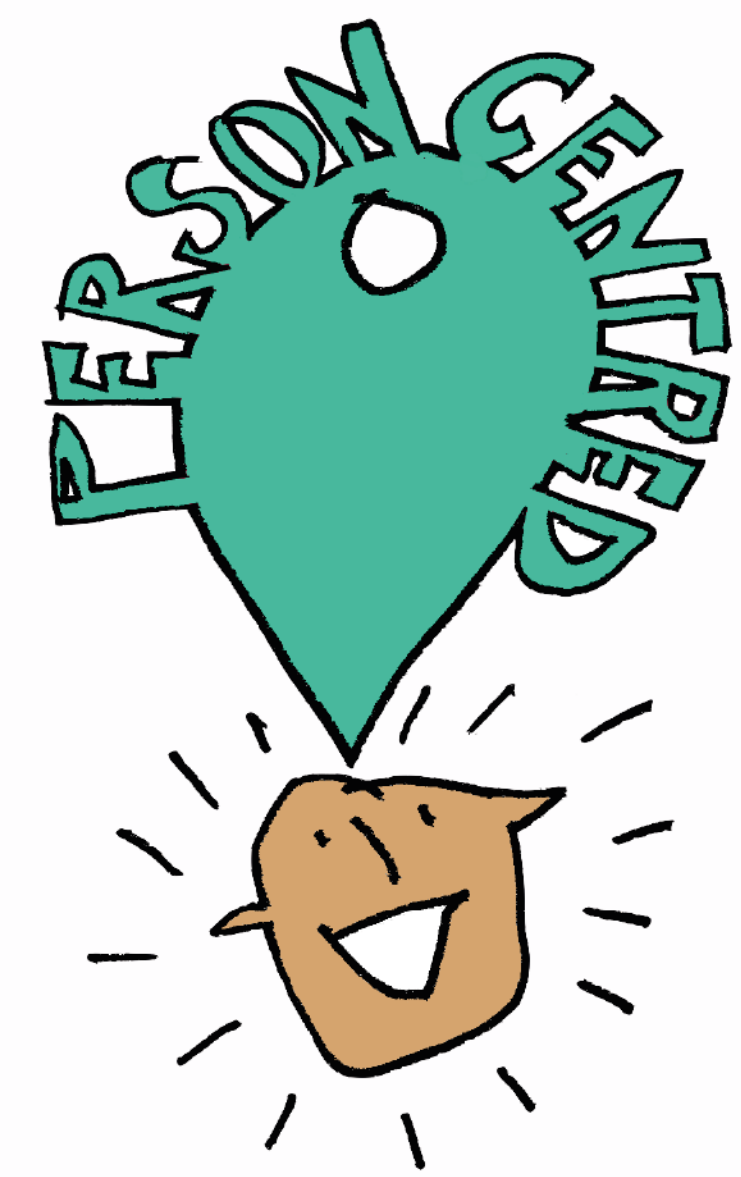


PATHWAY IN TO PAID WORK

Nursery onwards



Person-centred planning to ensure plan is based on what matters to me.

Aspirations for now and in the future.

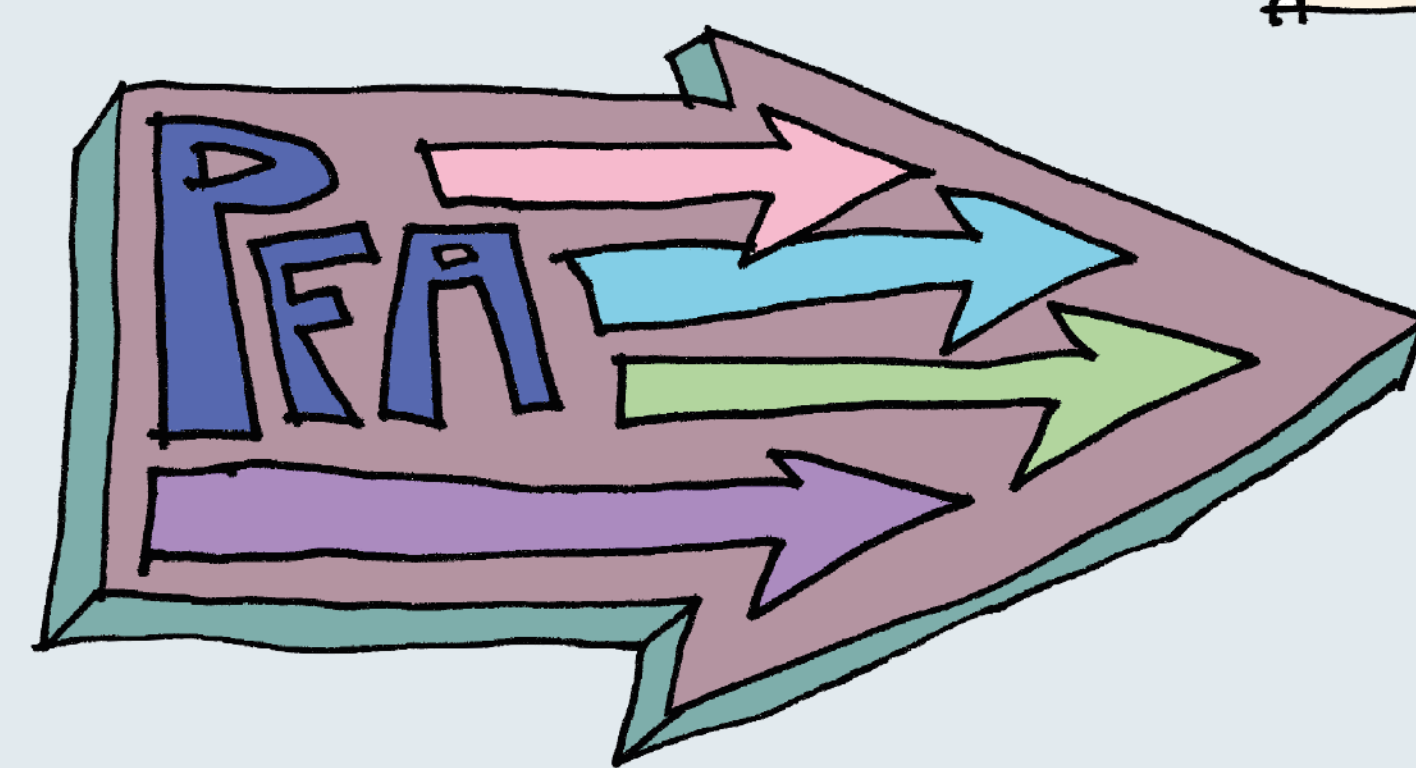


Year 9



Begin to plan vocational profiling (year 10) and work experience (year 11)

Information about employment pathways.



Advocacy

Year 10



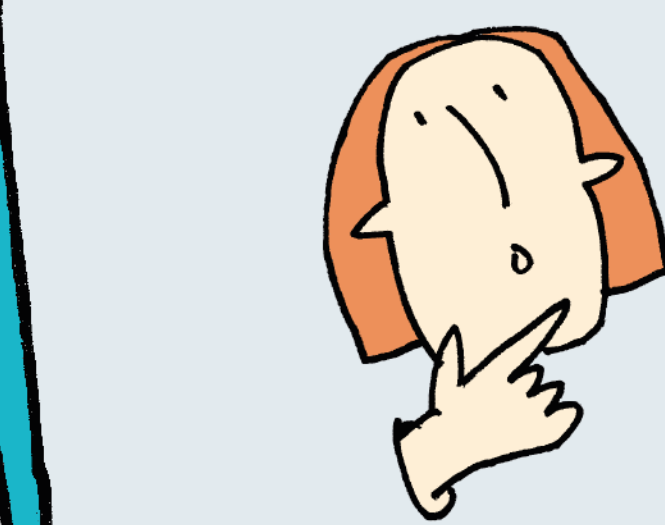
Complete vocational profile and plan work experience.



Great careers education, Information, advice and guidance



Year 11



Work experience based on vocational profile

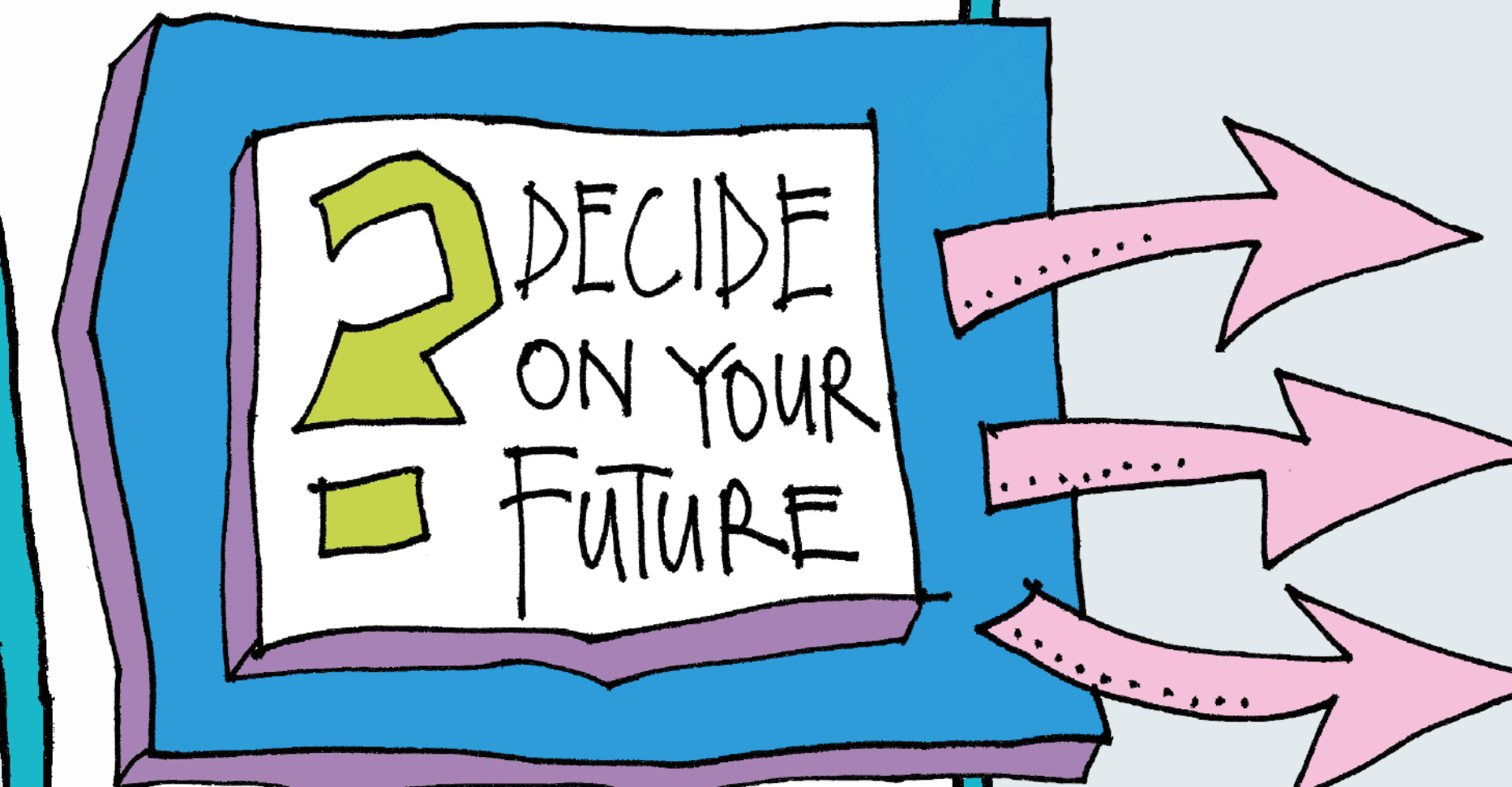
Plan post 16 pathway and which provider can deliver this.

Amend plan to include employment pathway and support.

Post 16

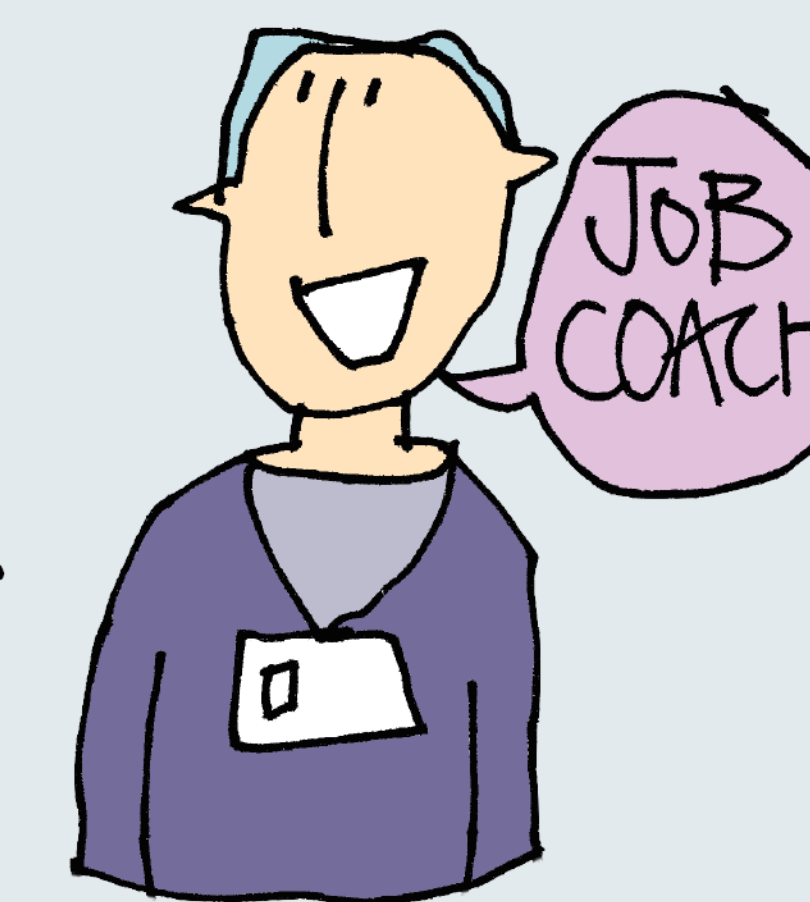


Study programme leading to...



Post 19

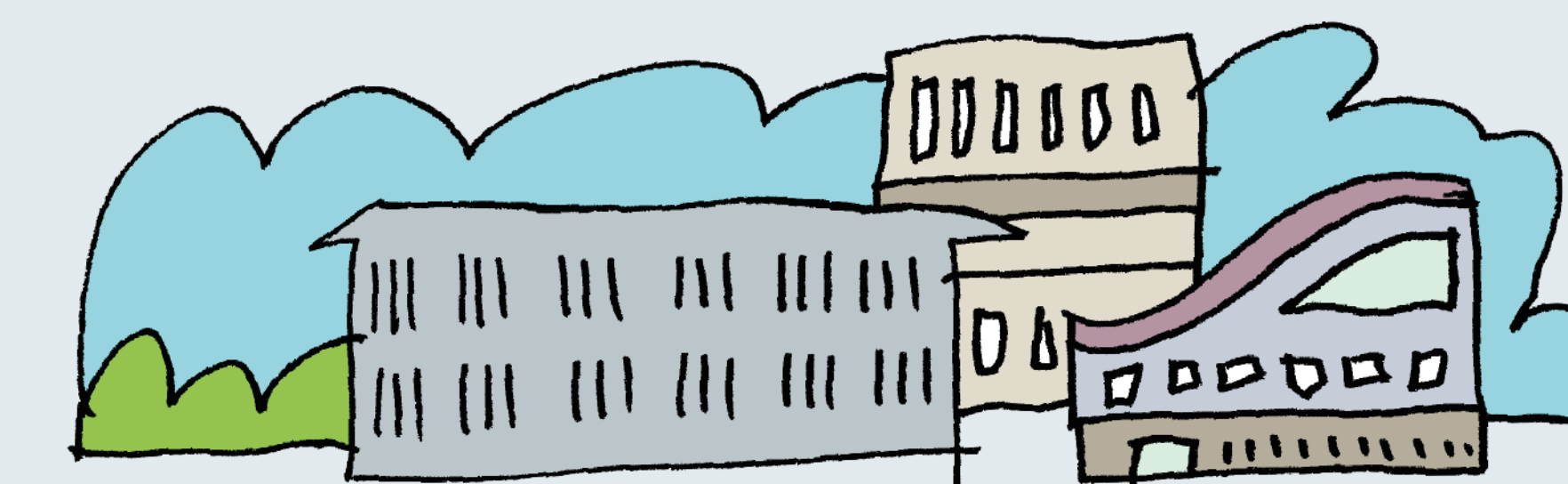
Access to Work for job coach support.



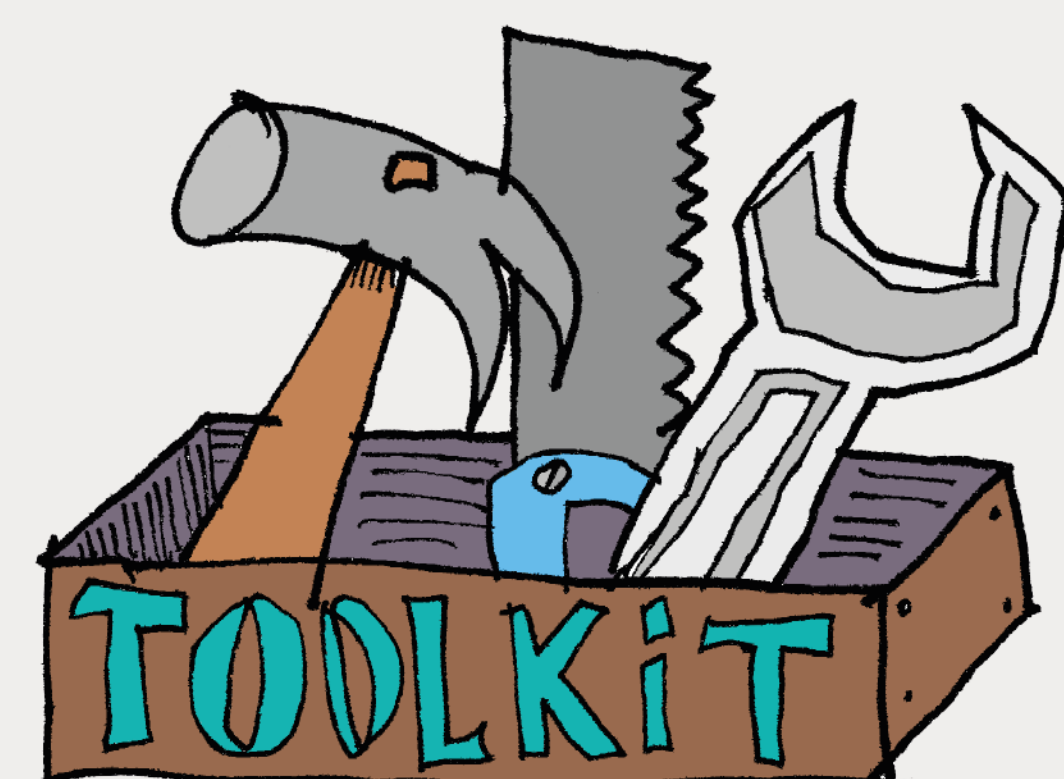
Supported Internship
Apprenticeship
Supported Employment

WHERE ?

General FE college
Special college
Training provider



Reasonable Adjustments



Person-centred planning
Careers education, information, advice and guidance
Partnerships
High quality curriculum
Employer engagement
Communication and information
Training and support for all

Have social care and health staff an awareness about the importance of raising aspirations and support this through their work?

Personal budgets for job coaching.

Read/accessible information in the local offer about support for employment?

Supported employment agencies or local supported internships attending annual reviews.