

Employers Road Map

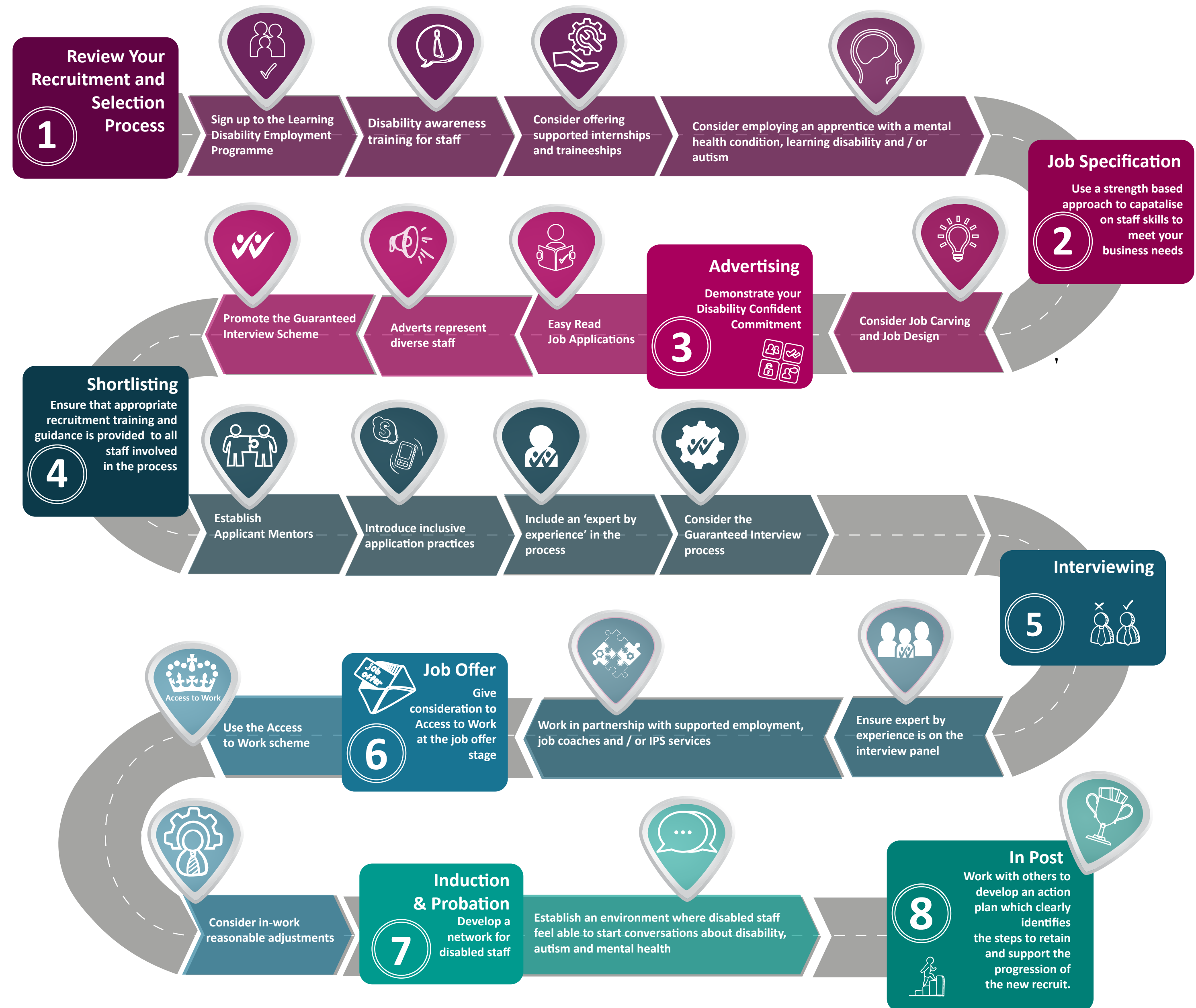
Supported Employment

It's good for business...

- Increased productivity
- Reduced staff turnover
- Increased staff morale
- Small costs, big benefits
- Demonstrates your Corporate Social Responsibility

It's good for the individual...

- Improved health and well-being
- Increased social inclusion
- Contributes to financial independence



Following this roadmap ensures good communication and positive interaction with disabled people in your employment.