

7 Great Questions: Conducting a risk assessment for outings

WRITTEN BY PETER BATES AND CAROL ROBINSON AS PART OF TIME TO CONNECT,

It is valuable when people develop friendships with others beyond the care system and can contribute to wider society. We wrote a long list of questions to help staff conduct a risk assessment for an outing. Here, we offer just seven of these questions – the ones that are the most important and press us hardest to support people to enjoy positive roles and relationships. If you want to think more about lift-sharing, meals out and what your vehicle looks like, please follow the links in the footnote below.

Avoid



The person is being denied choice and control

The person missing out on managing their own money

The person not being valued for their contribution

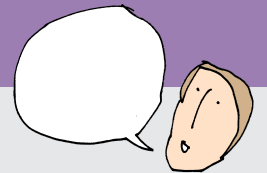
Social isolation and segregation.

Lack of access and welcome

The person coming to harm

Boredom and misery

By asking...



Does the person have real choice and control over the journey, timings, destination and travelling companions?

Do they have their own money and can they spend it without seeking permission or having to explain afterwards?

Does this place offer real potential for the person to become a regular participant, contributing and being missed if they are absent?

Will the person have an opportunity to meet ordinary citizens on the journey and at the destination? These citizens are not regulated or DBS checked and may become friends.

Do staff need to visit and make any arrangements with people at the destination to be sure that everyone will be welcome and will be able to connect with ordinary citizens?

How do you manage the risk that the person might be abused on the journey or at the venue without spoiling the outing?

How will you support the person to have more joy and adventure in life?

SEE ALL 42 QUESTIONS AT [HTTP://PETERBATES.ORG.UK/WP-CONTENT/UPLOADS/2019/10/RISK-ASSESSMENT-FOR-COMMUNITY-ACCESS.PDF](http://peterbates.org.uk/wp-content/uploads/2019/10/Risk-assessment-for-community-access.pdf).

FOR RESOURCES ON LIFT-SHARING, SEE [HTTP://PETERBATES.ORG.UK/HOME/LINKING-DISABLED-PEOPLE-AND-COMMUNITIES/MAY-I-GIVE-YOU-A-LIFT/](http://peterbates.org.uk/home/linking-disabled-people-and-communities/may-i-give-you-a-lift/).

FOR MATERIALS ON MEALS IN THE COMMUNITY, SEE

[HTTP://PETERBATES.ORG.UK/HOME/LINKING-DISABLED-PEOPLE-AND-COMMUNITIES/INCLUSIVE-MEALTIMES/](http://peterbates.org.uk/home/linking-disabled-people-and-communities/inclusive-mealtimes/).

FOR A DISCUSSION OF COACH-PAINTING THE MINIBUS, SEE [HTTP://PETERBATES.ORG.UK/HOME/GARDEN-SHED/PAINTING-THE-MINIBUS/](http://peterbates.org.uk/home/garden-shed/painting-the-minibus/)

<https://www.ndti.org.uk/our-work/our-projects/time-to-connect/>

Content developed by Carol Robinson and Peter Bates artwork by Jon Ralphs

