



National Development Team for Inclusion



Community Led Support

an NDTi Programme

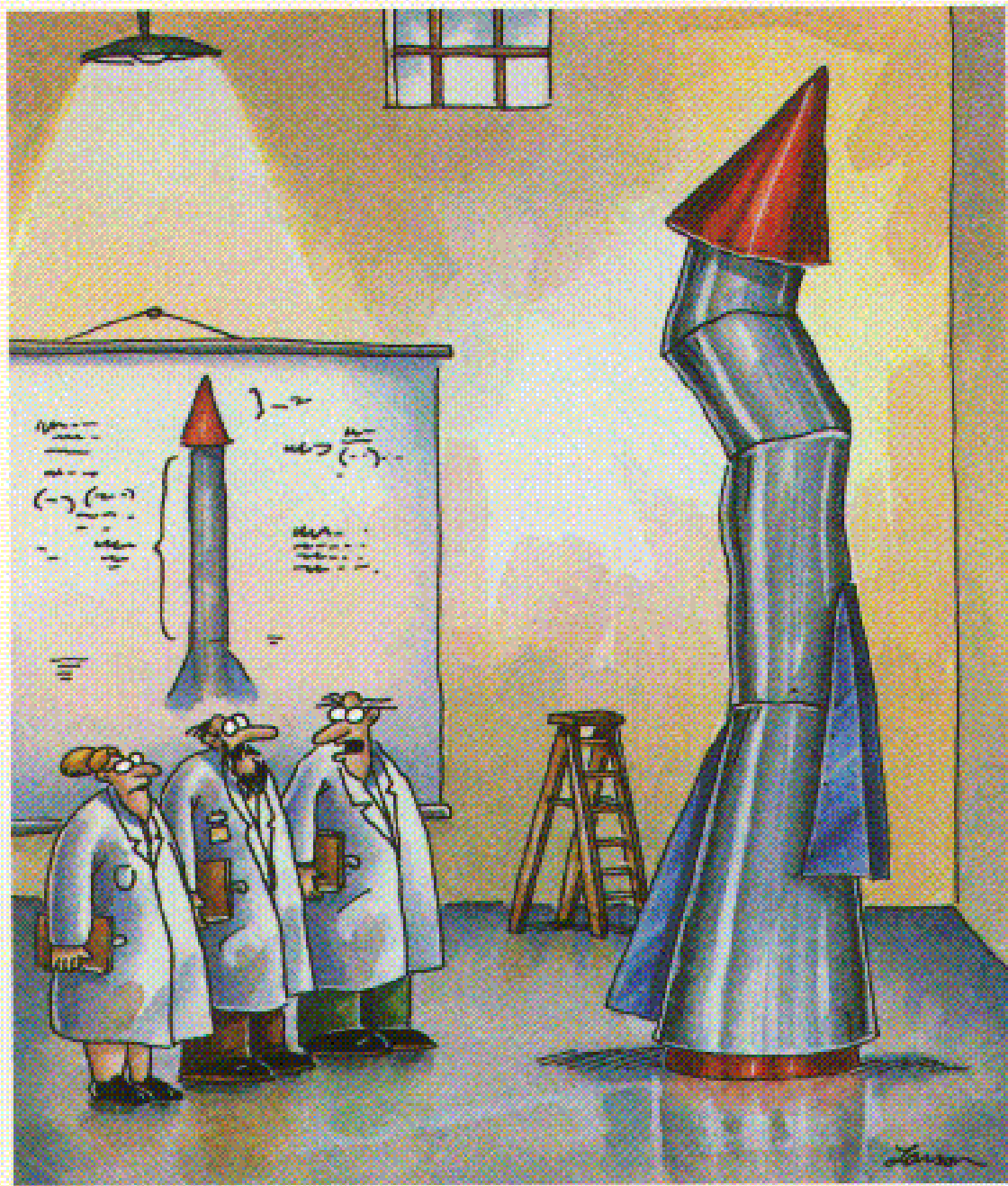
Community Led Support

National overview and learning

Elaine Torrance (NDTi)

25th April 2018



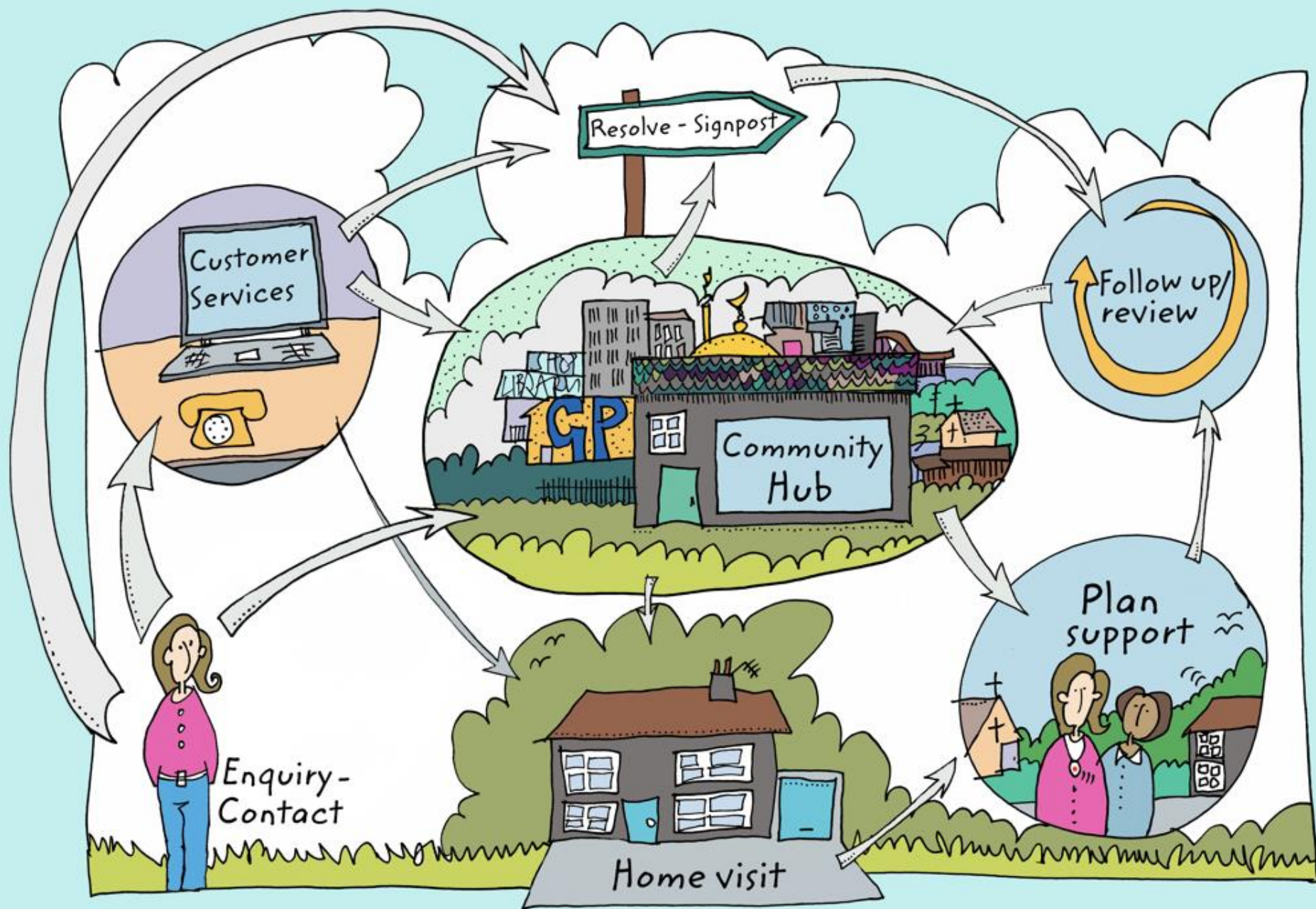


"It's time we face reality, my friends. ... We're not exactly rocket scientists."

CLS Principles

- Co-production brings people and organisations together around a shared vision
- There is a focus on communities and each will be different
- People can get support and advice when they need it so that crises are prevented
- The culture becomes based on trust and empowerment (with and across organisations)
- People are treated as equals, their strengths and gifts built on
- Bureaucracy is the absolute minimum it has to be
- The system is responsive, proportionate and delivers good outcomes





CLS in Scotland

- Currently working with 4 sites-
Scottish Borders, East
Renfrewshire, South Ayrshire,
Fife
- Independent Evaluation
- Context of Health and Social
Care Partnerships
- Community Empowerment Act



Community Led Support
an  NDTi Programme

What's the evidence and learning?

What works in Community Led Support?

Findings and lessons from local approaches and solutions for transforming adult social care (and health) services in England, Wales and Scotland

First evaluation report

Helen Bown, Jane Carrier, Carol Hayden and Yasmin Jennings

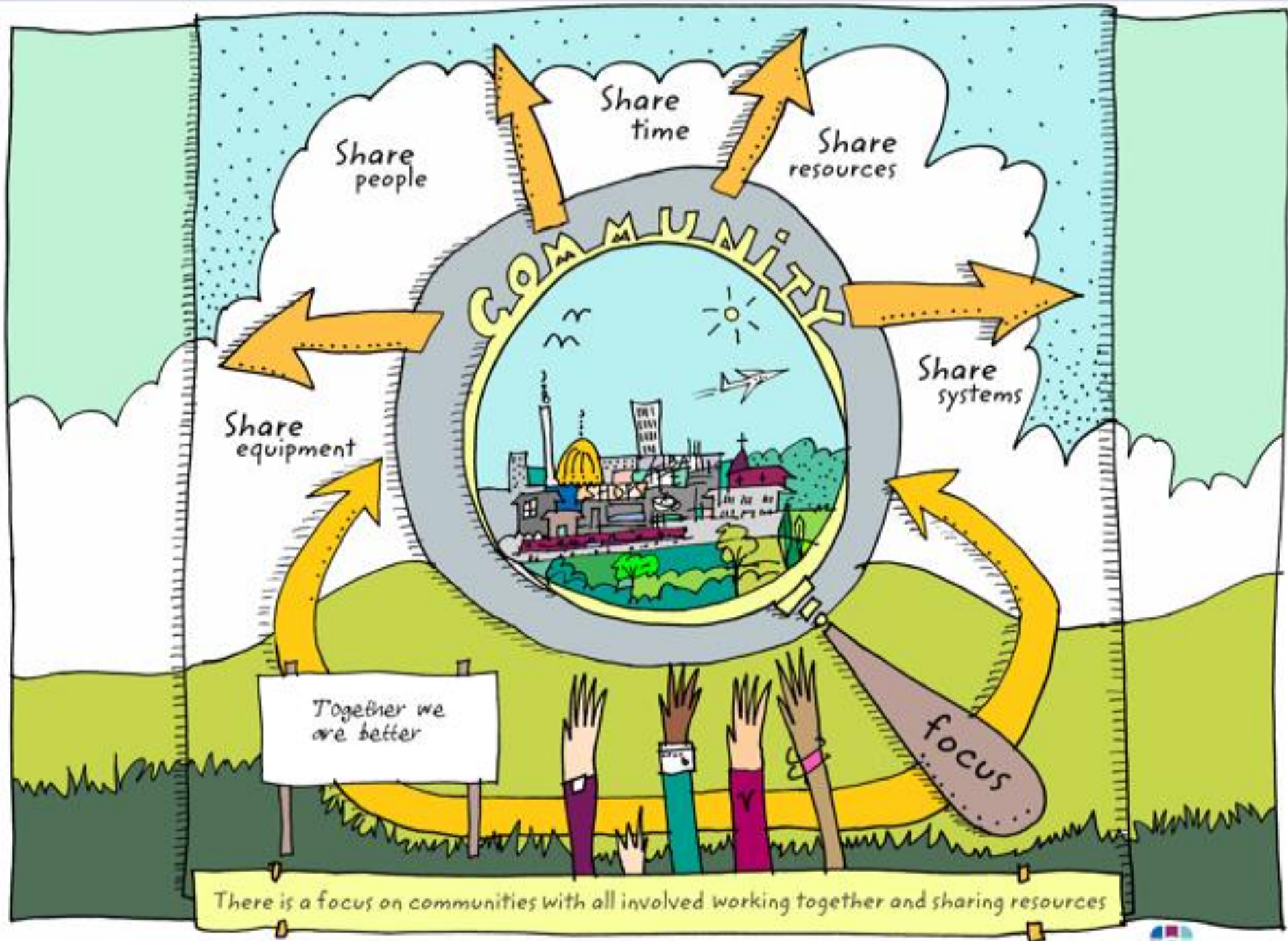


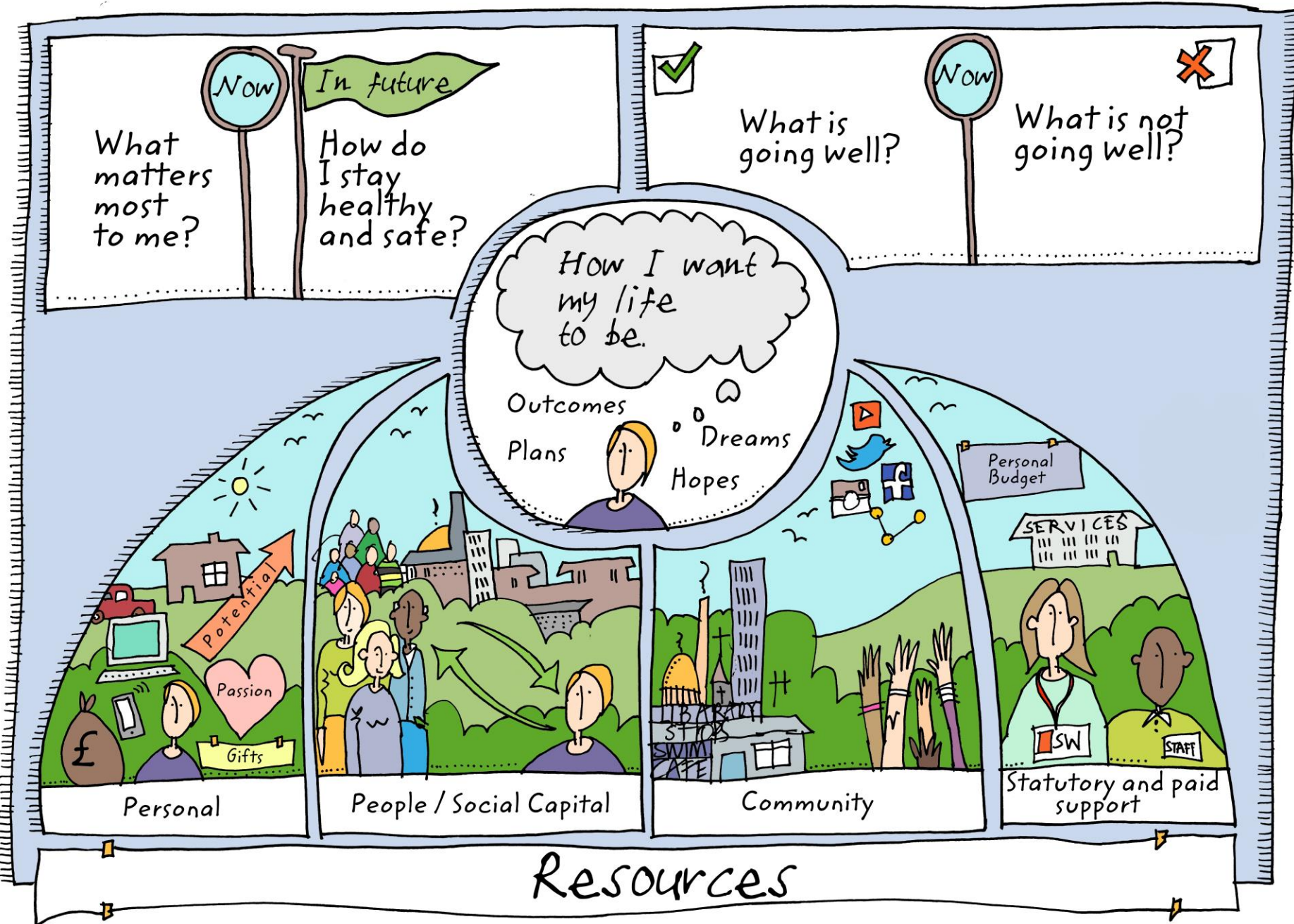
December 2017

- Evaluation of 9 areas
- Improved experience and outcomes for people
- Easier access and greater efficiency
 - Reduced waiting times
 - Quicker decision making
 - Fewer handoffs
- Engaged staff and improved morale
- Potential for savings



Community Led Support
an NDTi Programme





Implications for Commissioning

- Whole system change
- Early intervention and prevention
- Community focus/ community empowerment
- Important role of 3rd sector and community groups
- Community development

